

ALTC

REALTY

265 BELLEFONTAINE

PASADENA

11,662 SQFT
1.03 ACRE LOT

7 BEDROOM
4/4/2/0 BATH

\$7,800,000
LISTING PRICE





FEATURES

- IMMACULATE PROPERTY SITUATED IN SW PASADENA -
- STUNNING CRAFTSMAN COMPLETELY REMODELED AND PRESERVED IN 2013 -
- BRAND NEW KITCHEN (MARBLE COUNTERS, 4 WOLF OVENS, VIKING RANGE, DUAL FRIDGE) -
- CLOSE PROXIMITY TO MANY PRESTIGIOUS PASADENA PRIVATE SCHOOLS -
- REFINISHED POOL WITH POOL HOUSE AND BATH -
- 2,000 SQFT MASTER SUITE -

ALTCREALTY.COM

ALAN LU

E: alu@altcrealty.com / T: 626 378 8007

BRE# 01514595



ALT CREALTY does not guarantee the accuracy of provide information in this advertisement. Buyers are advised to independently verify the accuracy of provided information through personal inspection and with appropriate professionals

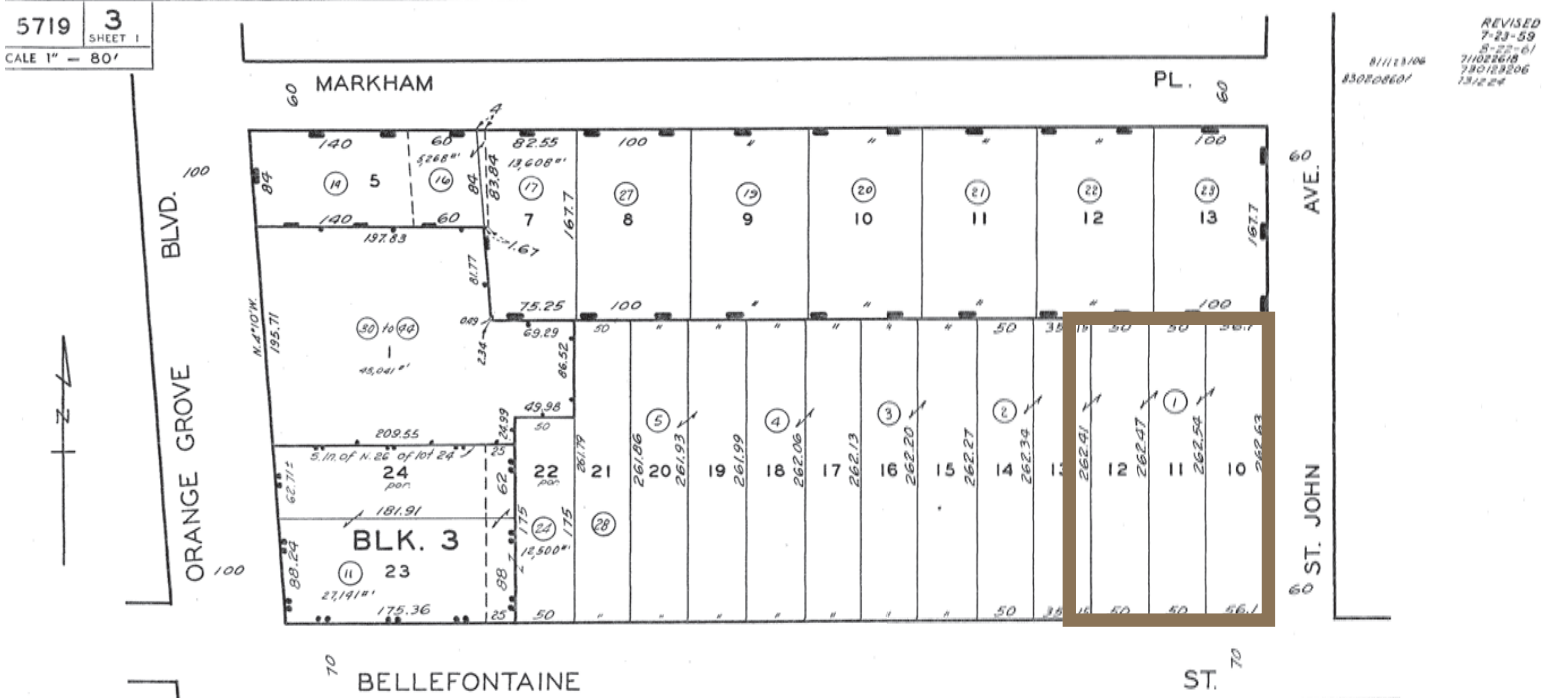
ALTC

REALTY

265 BELLEFONTAINE

PASADENA

PARCEL MAP



The assessment of units in the following Airspace Plans, includes all rights and interests in the common areas as set forth in deeds of record.

Airspace Plan Reference	Common Area Tract No.	Blk.	Lots	Type of Airspace	Subdivision Sheet
#1138933-11-18-81	40347	--	1	Condo	Sheet 2

*Diagrammatic depicts approximate dimensions.

LA FUENTE PLACE

M.R. 10 - 93

CARLISLE HEIGHTS

M.R. 28 - 11

CONDOMINIUM
TRACT NO. 40347
M.B. 990-37-38

RESUB. OF LOTS NOS. 1 TO 22 INCLUSIVE AND
LOT NO. 25 BLK. 3 LA FUENTE PLACE

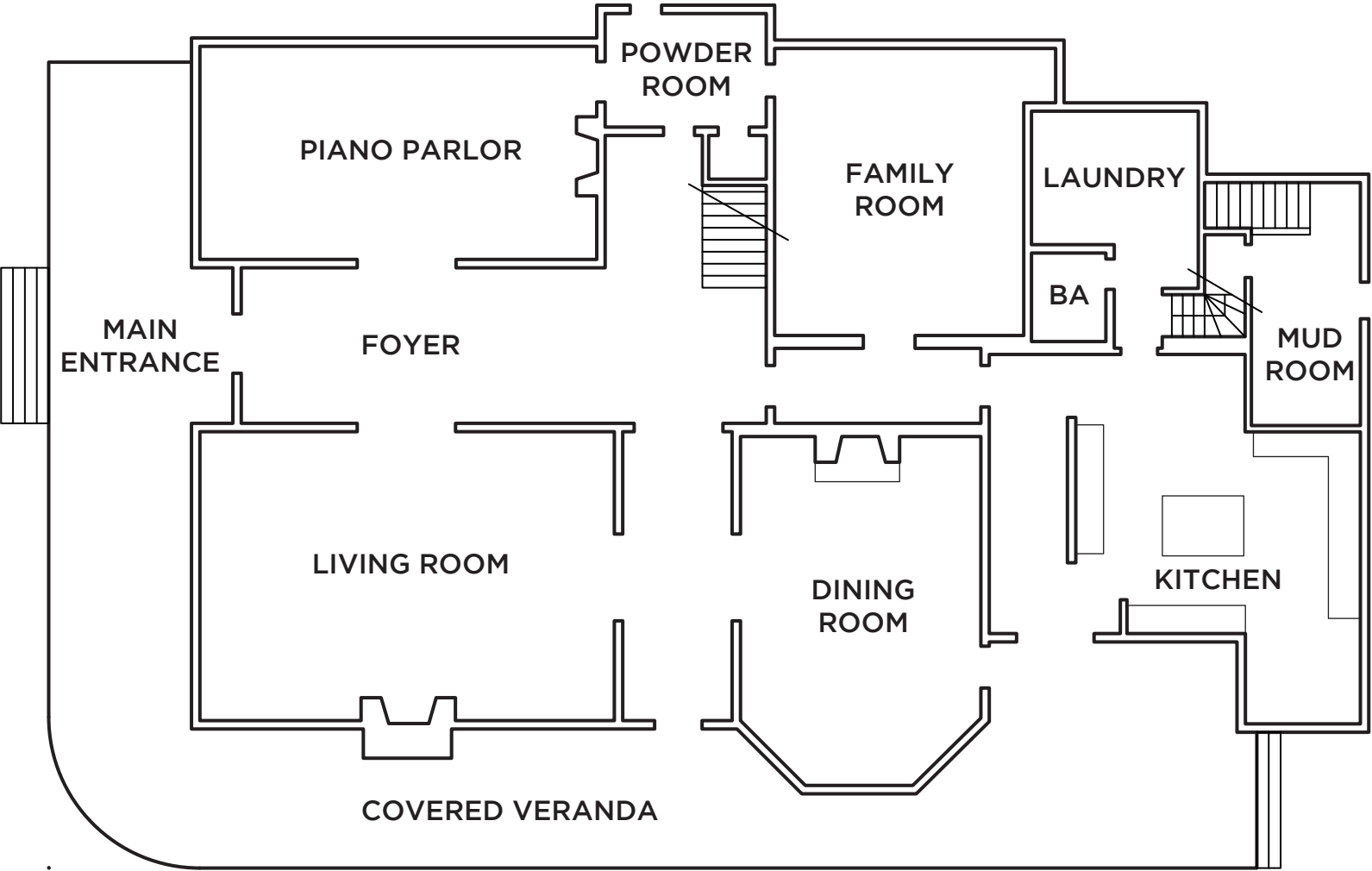
M.R. 34 - 85

FOR PREV. ASSM'T. SEE: 1342-3

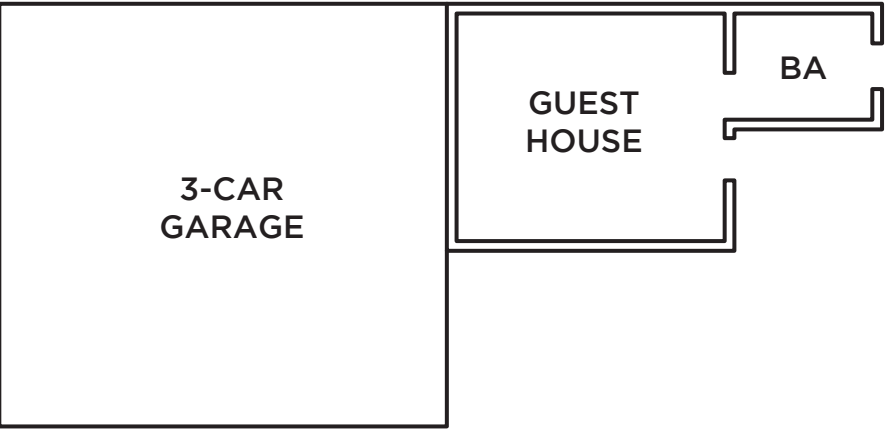
ASSESSOR'S MAP
COUNTY OF LOS ANGELES, CALIF.

265 BELLEFONTAINE ST SCHEMATIC PLANS

*DIMENSIONS AND AREAS ARE APPROXIMATE
**BUYER TO VERIFY ALL INFORMATION
***WINDOWS NOT SHOWN



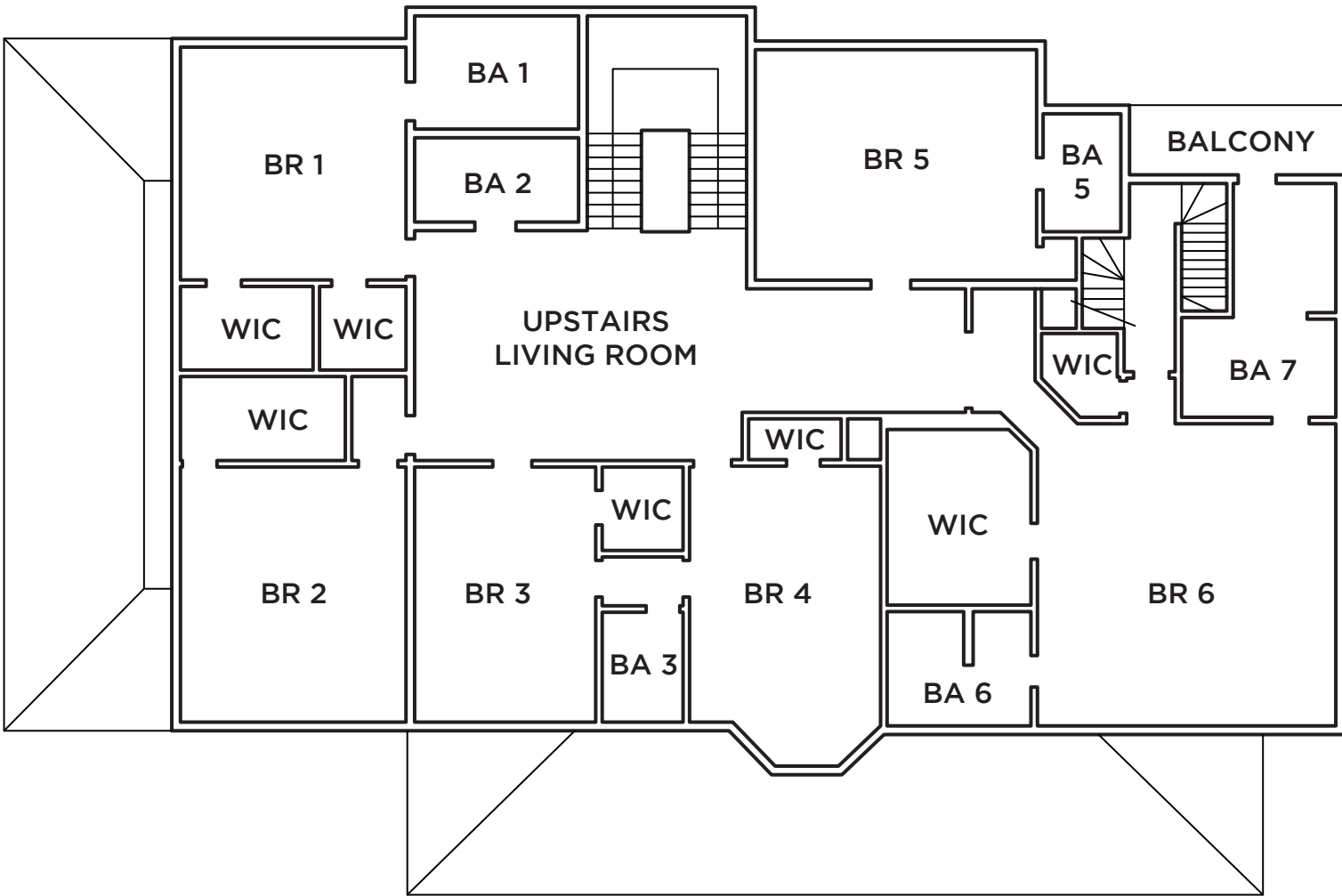
FIRST FLOOR PLAN



POOL

265 BELLEFONTAINE ST SCHEMATIC PLANS

*DIMENSIONS AND AREAS ARE APPROXIMATE
**BUYER TO VERIFY ALL INFORMATION
***WINDOWS NOT SHOWN



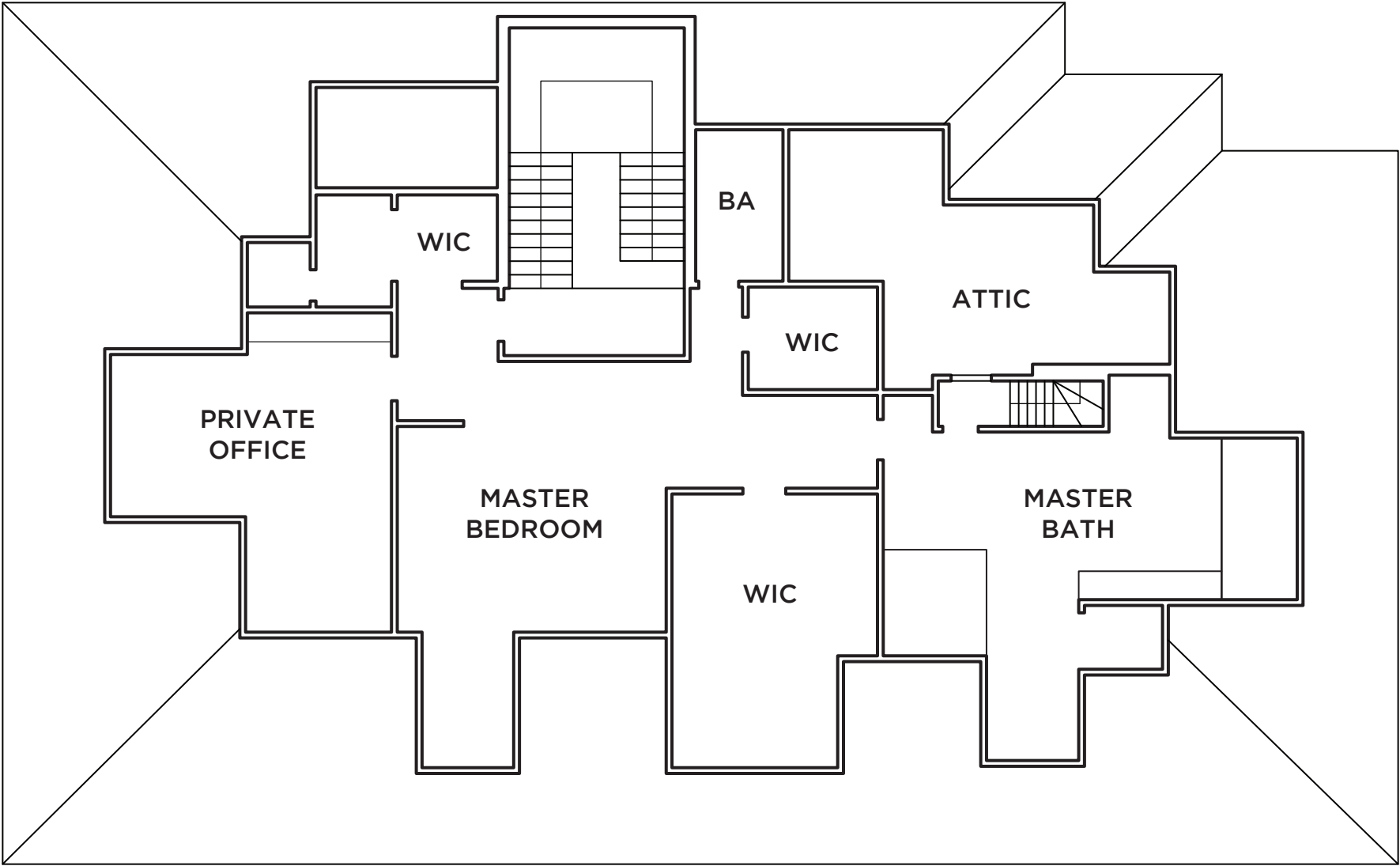
SECOND FLOOR PLAN

0 5 15 FT

265 BELLEFONTAINE ST SCHEMATIC PLANS

*DIMENSIONS AND AREAS ARE APPROXIMATE
**BUYER TO VERIFY ALL INFORMATION
***WINDOWS NOT SHOWN

MASTER SUITE - APPROX. 2000 SQFT



THIRD FLOOR PLAN

